

—死産の動向—

図18 死産率の年次推移(北九州市ー全国)

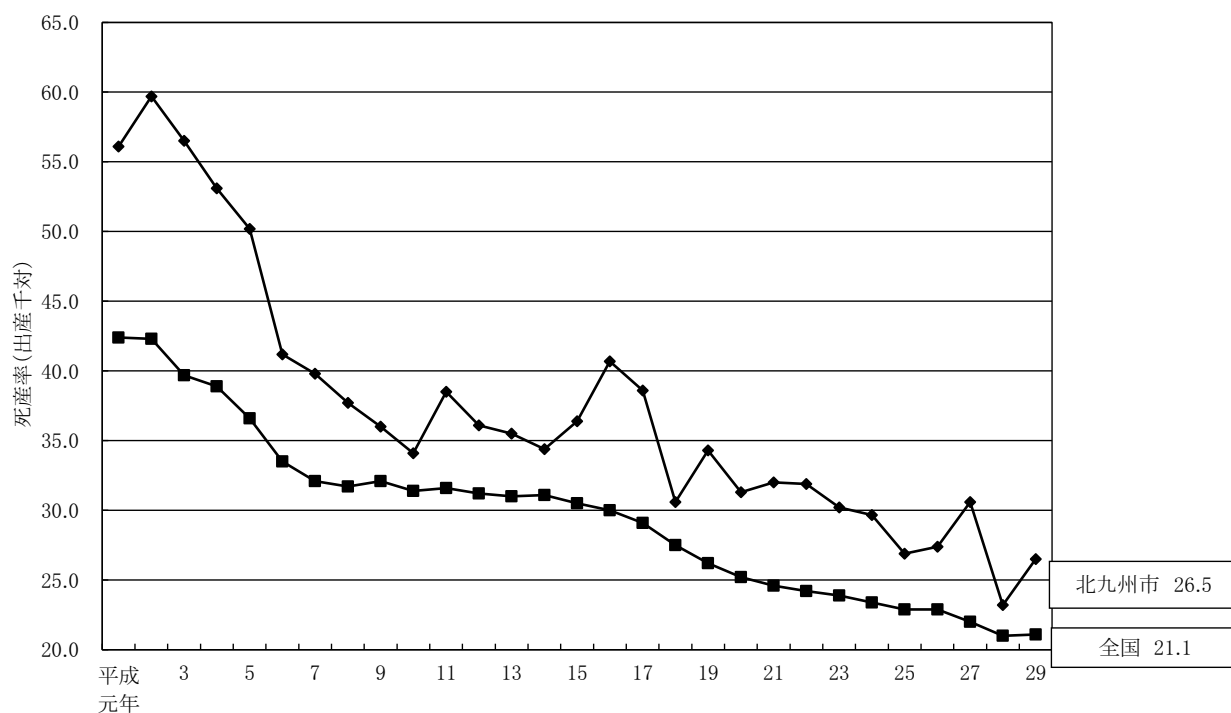


図19 自然死産率及び人工死産率の年次推移

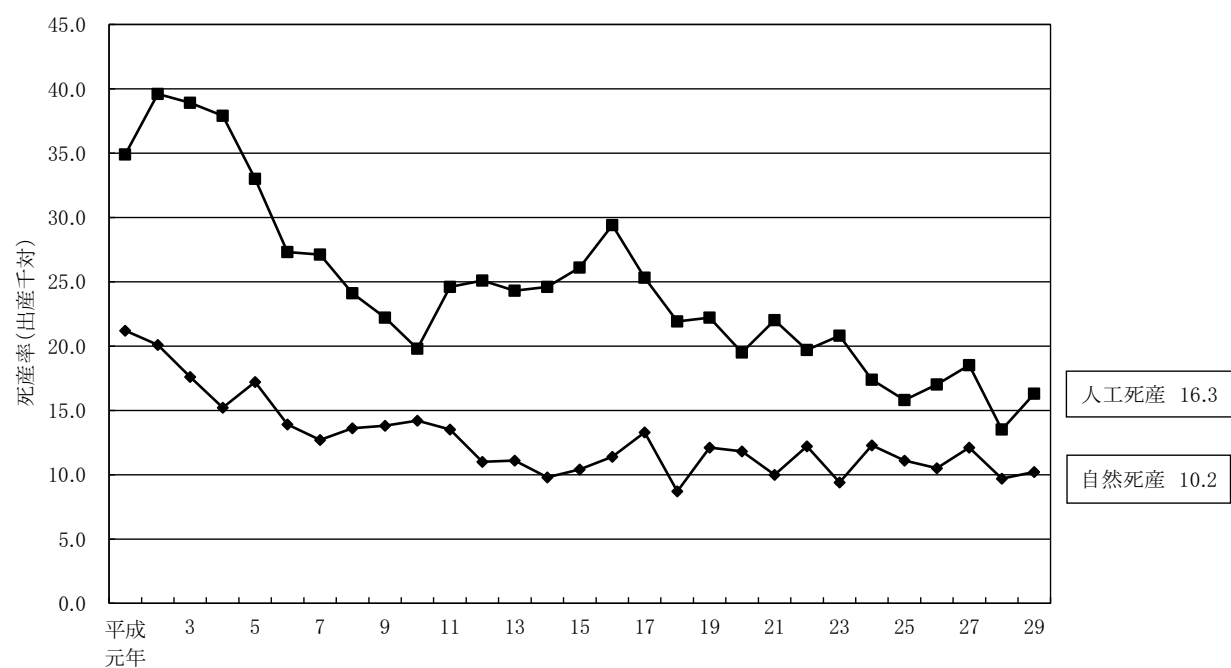


図20 死産の割合(妊娠週数)

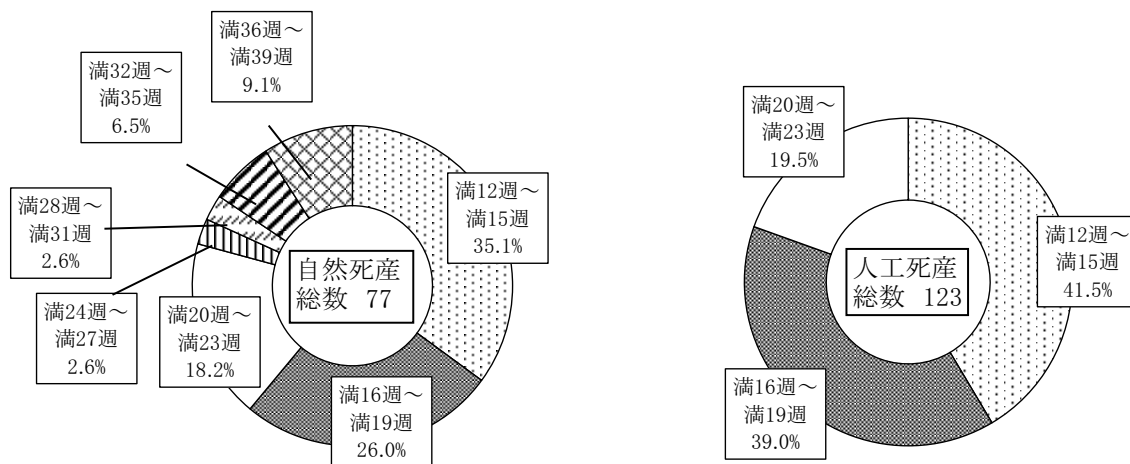


図21 死産の割合(母の年齢)

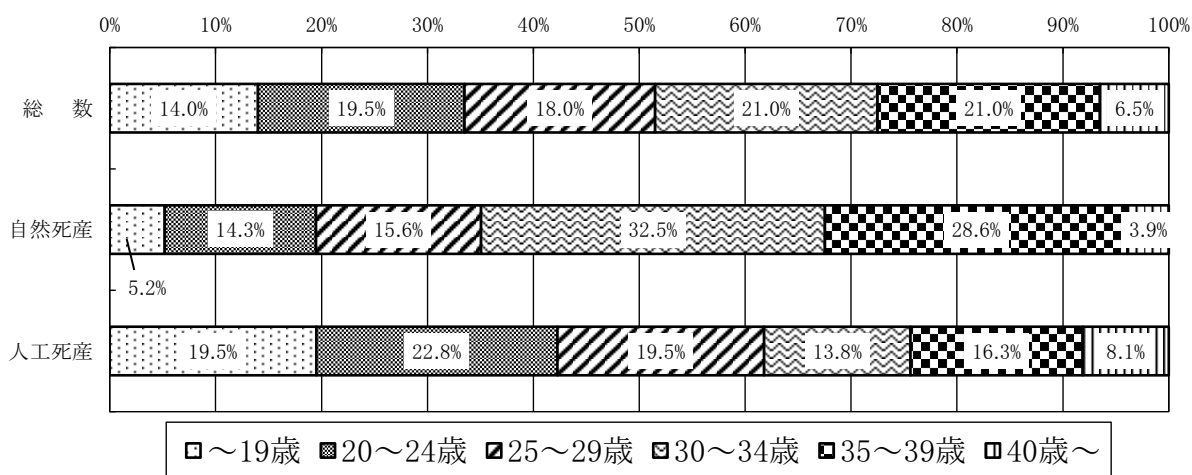


図22 死産数(自然-人工・区)

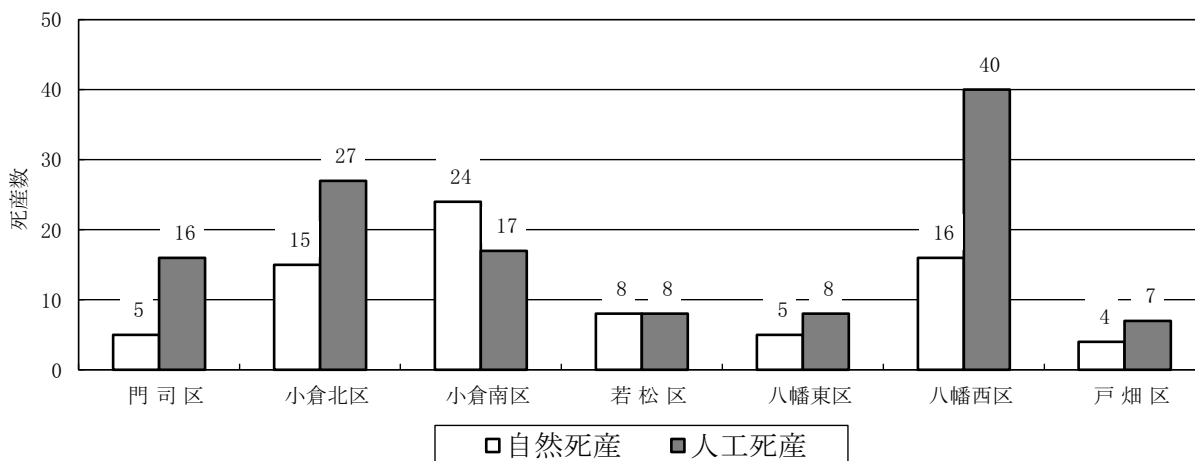


図23 死産数(母の年齢・区)

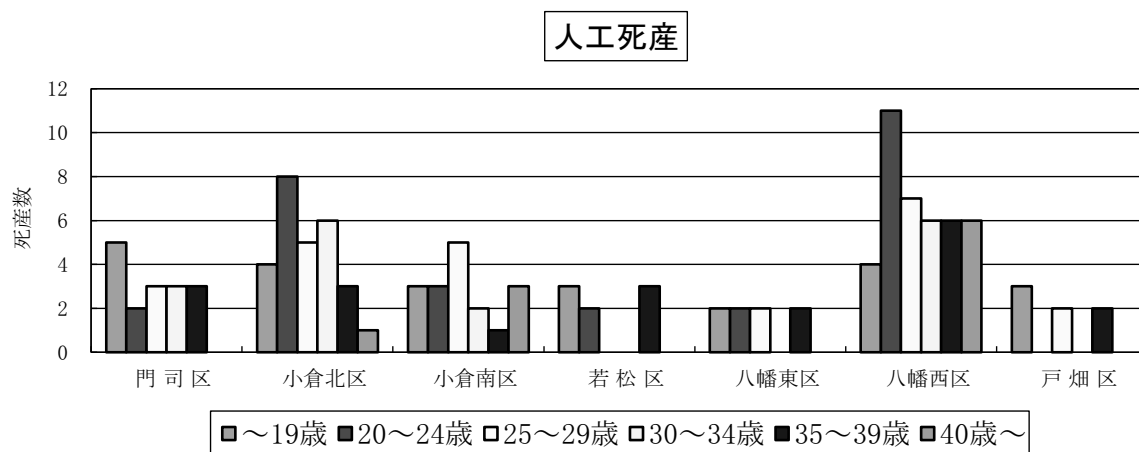
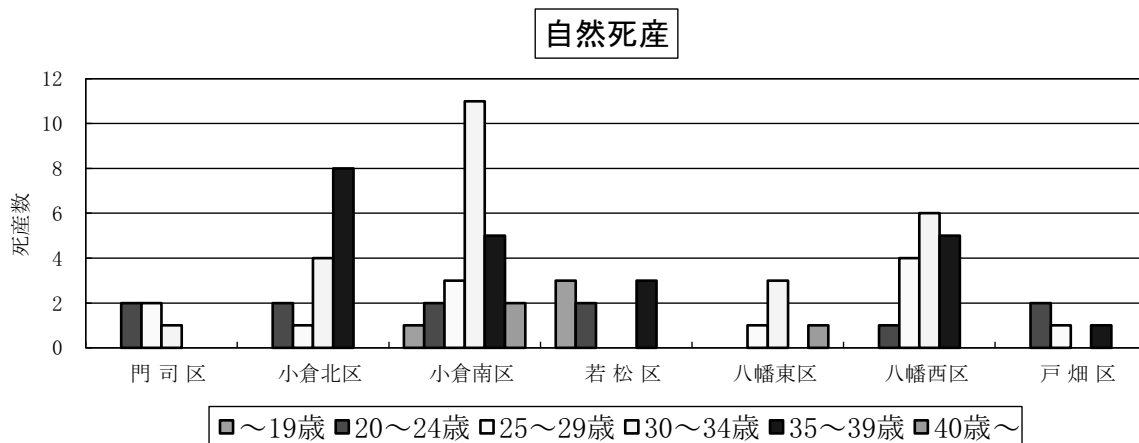


図24 死産率(全国一福岡県一21大都市)

